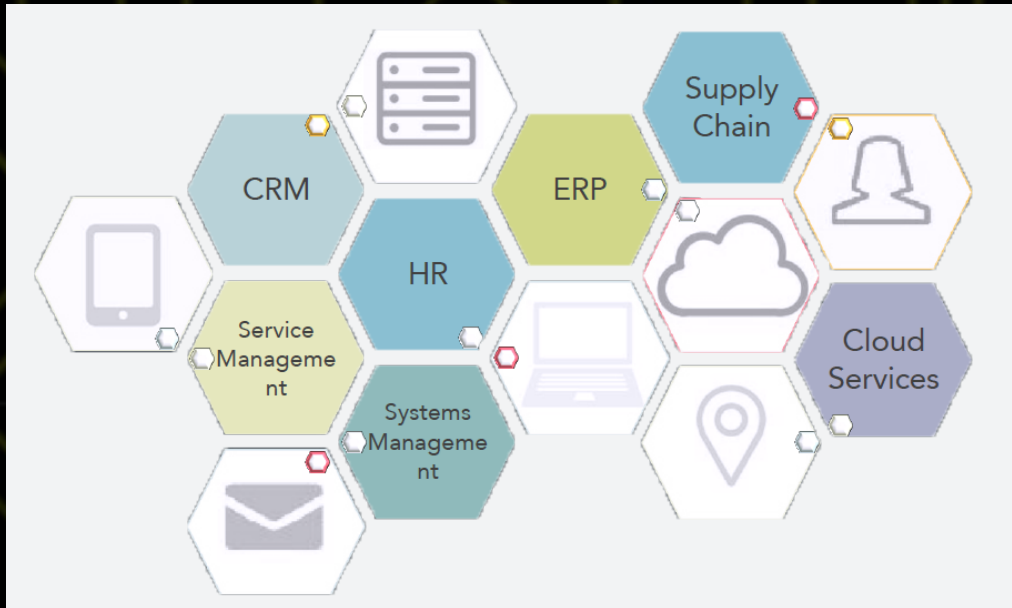




handz.on

Insightz.on

Next generation visualization for
your enterprise service management



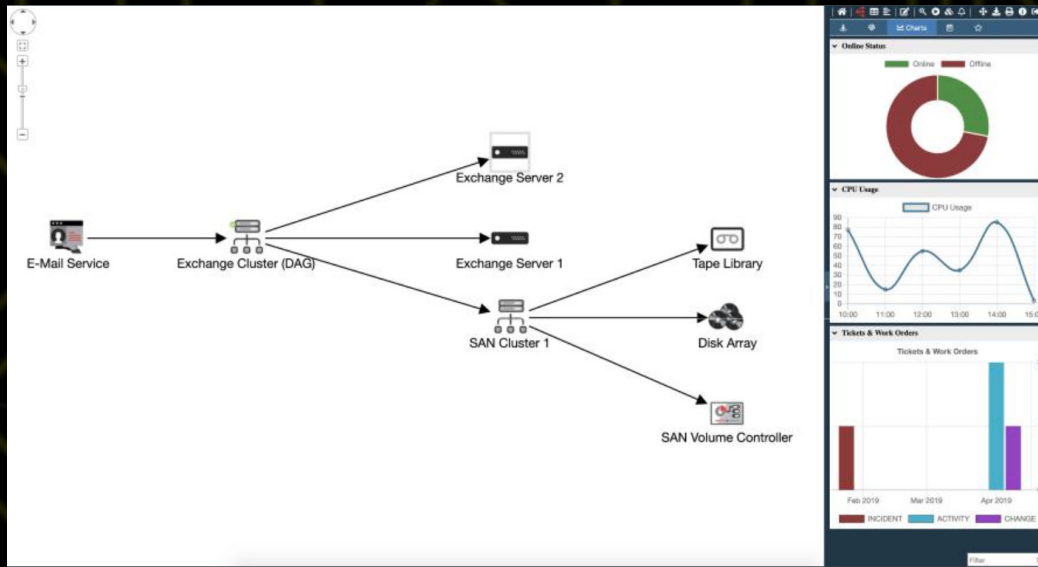
- **transparent**
- **clear**
- **uniform**

The challenge

Dynamically expanding IT and cloud infrastructures employ a wide range of different systems to get the job done. The relative service management tools and ERP, logistics, CRM and production execution systems used in these infrastructures are rarely run on a single platform. Such isolated applications make it difficult to gain a clear overview of the information that is needed to provide optimal service management and facilitate smooth business processes. Frequently, the data needed for correlation analysis and risk assessment are tucked away in various tools, a fact that prevents a comprehensive evaluation of a subject from being conducted.



**Comprehensive
correlation analysis**



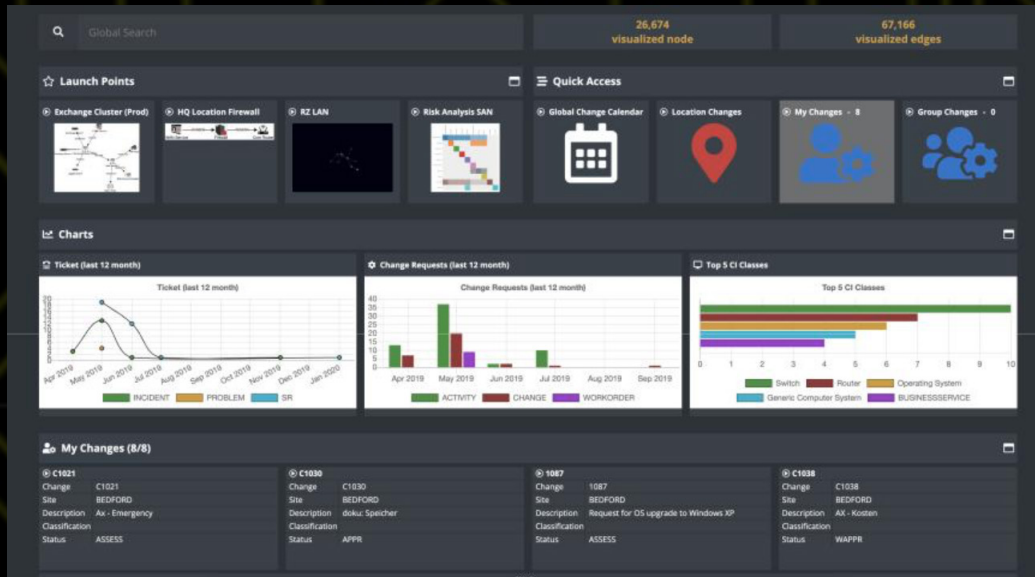
- **insightful**
- **efficient**
- **real time**

The solution

Insightz.on visualizes data and their correlations from a range of data sources in real time. The seamless integration that it offers with leading service management tools like IBM Maximo, USU Valuation and ServiceNow creates the ultimate user experience. A range of 2D and 3D views provides you with insightful information about relationships between your data. They will also help you to quickly troubleshoot problems as well as plan and assess the risks of change requests. At the same time, Insightz.on will enable your business services to perform at peak efficiency.



**Multi-system, clear data
visualization**



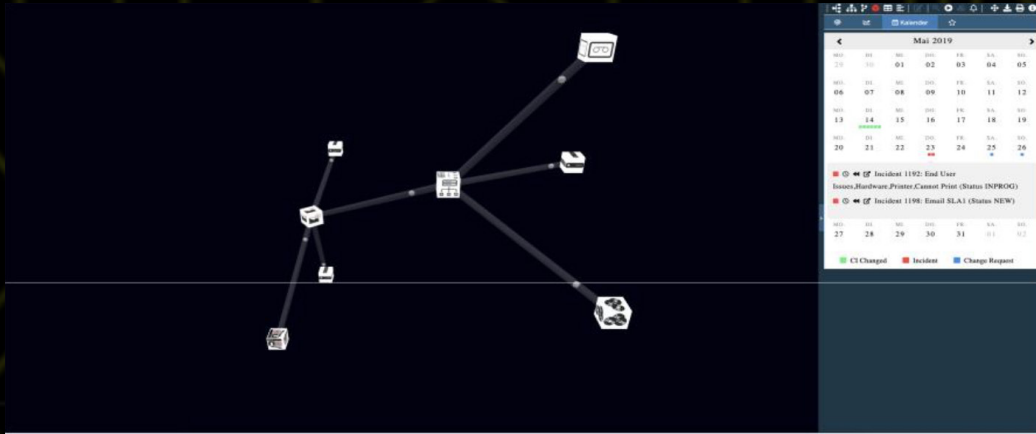
- **central**
- **uncomplicated**
- **fast**

Central dashboard

The dashboard provides fast access to stored requests and facilitates company-wide searches throughout all systems and data sources.



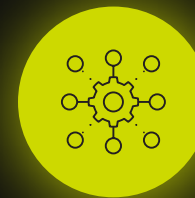
**All KPIs in one
central view**



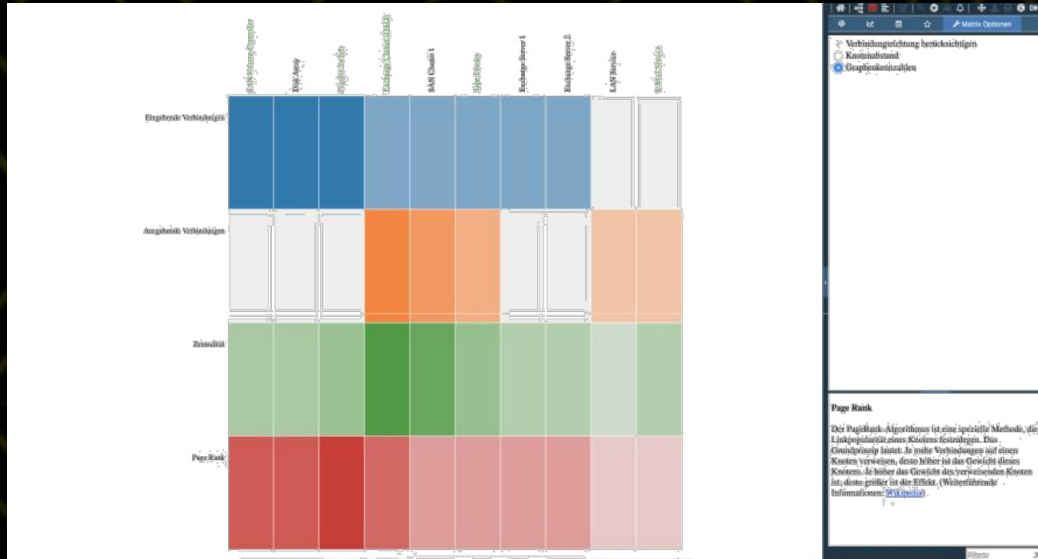
Visualization and monitoring of events

You can use your personal calendar to link past events ad hoc with the respective graphs. With one click, you can see a graph that shows information recorded at the time of the event (return function). This will enable you to directly react to changes, learn from the past, and identify and avoid potential failures at an early stage.

- user friendly
- simple
- practical



**An overview
of the entire data history**



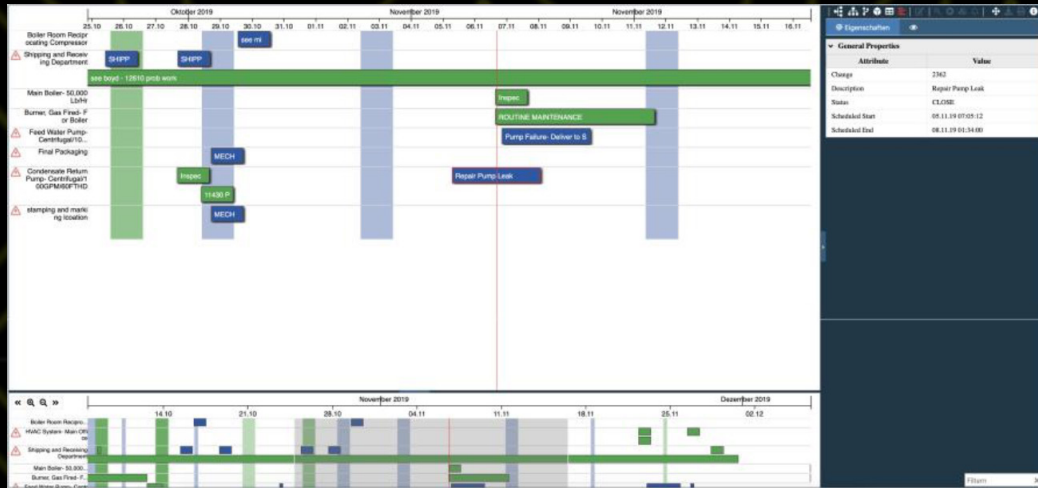
- multi-system
- reliable
- well-grounded

Risk assessment

Drawing on multi-system data, Insightz.on will calculate key figures and clearly display them. This analysis will enable you to quickly and reliably access the potential impact and risks of failures or changes throughout the IT landscape and to objectively and thoroughly evaluate the particular issue.



**Uncomplicated, seamless
risk assessment**



- comprehensive
- descriptive
- comprehensible

Time data

A calendar will enable you to keep track of events in your organization across all systems. Such an option is particularly practical and important when required information about planned events is located in various systems, especially when you are talking about things like maintenance windows and requests for changes.



**Continuous overview
of the history of all events**

Your contact partner

Britta Weber

Director Sales & Marketing

britta@on.de

We are handz.on

We are your partner for the implementation and modification of your central platform solution – functional, customer specific and secure.



handz.on

handz.on GmbH
St.-Martin-Straße 64,
81541 München

T +49-89-7167767-0
F +49-89-7167767-99
M info@on.de